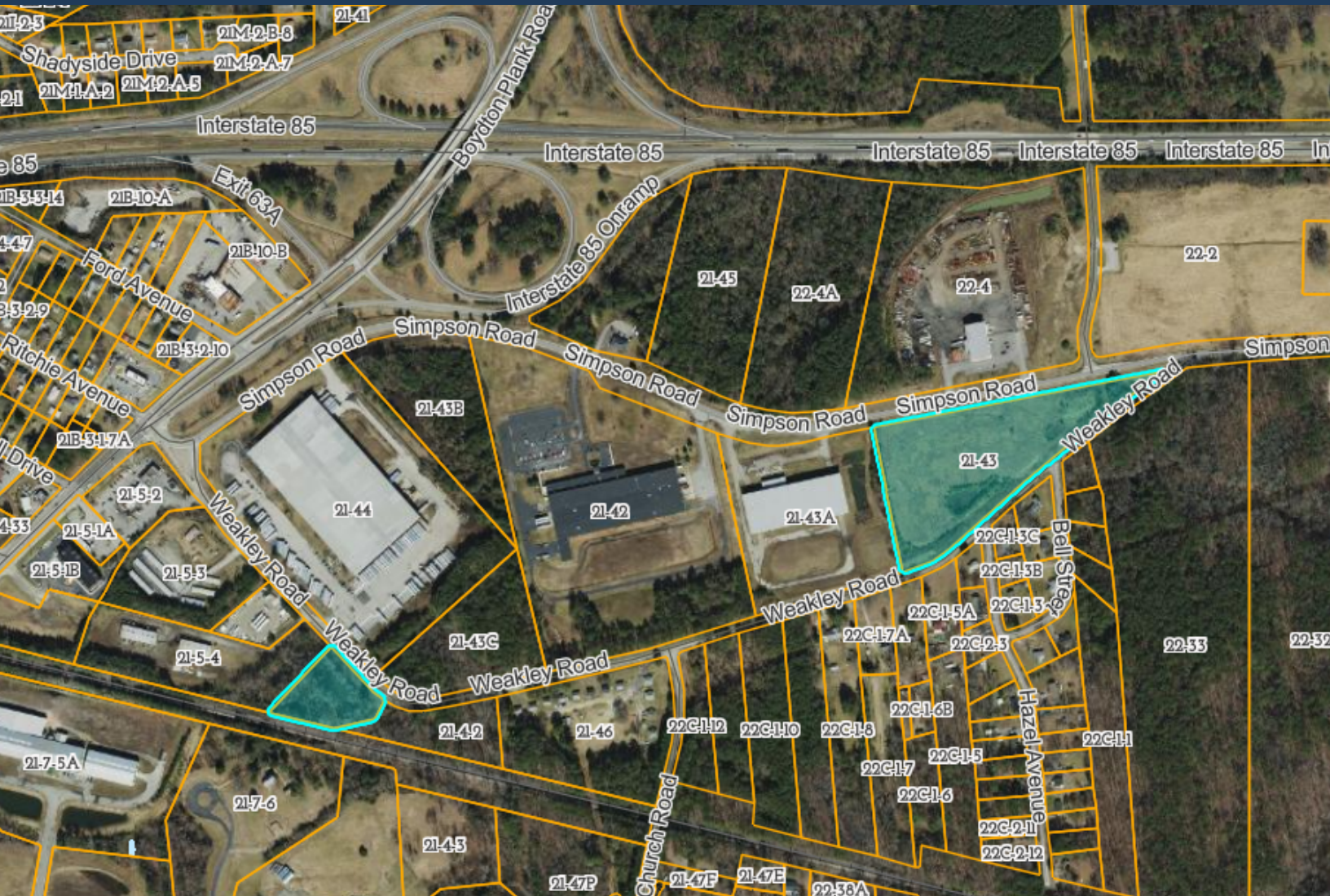




DINWIDDIE COUNTY VA

ECONOMIC DEVELOPMENT

DINWIDDIE SIMPSON ROAD SITE – N. DINWIDDIE, VA



SIMPSON ROAD AND 7TH AVENUE, N. DINWIDDIE, VA

FOR MORE INFORMATION, CONTACT:

Morgan Ingram,
Economic Development Director
804.265.1233
mingram@dinwiddieva.us

Tammie Collins,
Deputy County Administrator
804.265.1226
tcollins@dinwiddieva.us

DINWIDDIE SIMPSON ROAD SITE

SITE SPECIFICATIONS

 **TOTAL SITE:**
8.116 acres

 **ZONING:**
Industrial (M-1)

**GRADED AT 90%
COMPLETION!**

Workforce:

Sector	Workers	Average Wage
Manufacturing	10,082	\$23.82 / hour
Logistics	19,573	\$20.64 / hour
Office	65,343	\$34.67 / hour

Data provided by the VA Economic Development Partnership

Utilities:

Electric: Dominion Energy

Water: Dinwiddie County

Sewer: Dinwiddie County

Natural Gas: Columbia Gas of Virginia

Transportation:

Interstate: I-85 - 1.1 miles

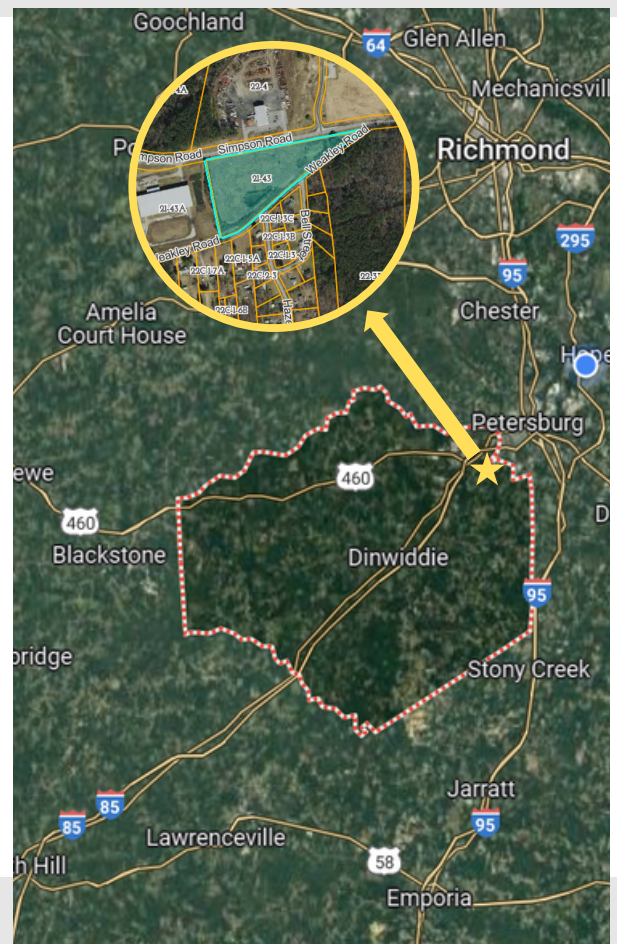
4-Lane Highway: US Route 460 - 2.2 miles

Commercial Airport: Richmond International (RIC) - 29.5 miles

General Aviation: Dinwiddie County Airport (PTB) - 4.4 miles

Port of Virginia (Richmond): 23.6 miles

Port of Virginia (Hampton Roads): 75.5 miles



2022 & 2023

EXTENDED LABOR FORCE STATS

*Labor force pulls from localities within a 25 mile radius of Dinwiddie County's borders.

583,722
POPULATION

292,873
CIVILIAN
LABOR FORCE

\$76,594
MEDIAN
INCOME

84.6%
HIGH SCHOOL
GRADUATE OR
HIGHER



 MINGRAM@DINWIDDIEVA.US

 804-265-1233

 WWW.DINWIDDIEVA.US